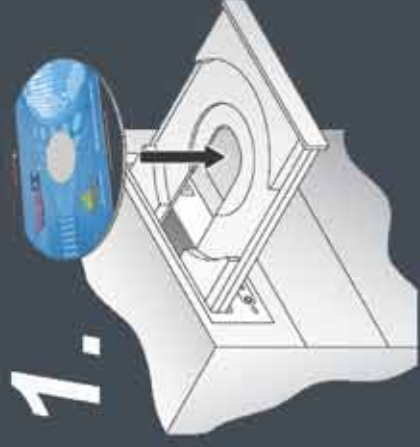


1.

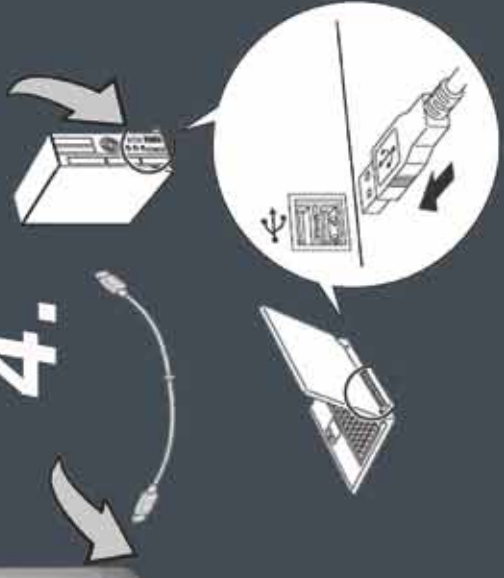


2.

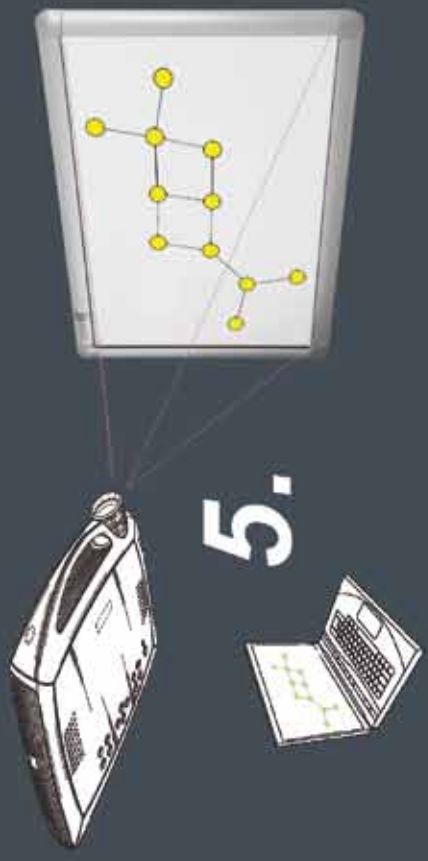


3.

4.



5.



6.



7.



## ***Quick Start Guide***

1. Insert the TouchIT CD in the CD drive of your computer or laptop. If it does not autorun, browse to the CD drive and click on the 'Setup.exe' file to open the menu.
2. Install TouchIT Transcribe by clicking on the logo as shown in the picture overleaf. This will install the 'Green Hand' server application to allow you to calibrate your TouchIT board. An icon will appear on your desktop.
3. Install WizTeach Software by clicking on the logo on the CD menu as shown in the picture overleaf.
4. Connect one end of the supplied USB cable to the TouchIT Board's USB Connection and the other end to any available USB port on your computer or laptop.
5. Connect the projector to the computer or laptop using an appropriate cable for the make and model of projector you are using. Align and focus the image on the TouchIT Board and 'toggle' the display so that your computer is using the projector as an external display and you can see your desktop being projected onto the TouchIT Board.
6. Double click on the green TouchIT Server icon on your desktop as shown in the picture overleaf. The green hand will then appear in the System Tray of the computer or laptop to indicate it is running.
7. Right click on TouchIT logo in the system tray and choose 'Calibrate'. Touch the calibration points one by one with your finger or stylus on the TouchIT board being careful to hit the centre of each cross hair for maximum accuracy.

You now have full control of your computer from the TouchIT Board. Touch for a left click, touch and hold for a right click.

Double click the TouchIT Wizteach logo to open the Wizteach software.

## ***Package Contents***

- 1 x TouchIT Board
- 1 x Installation CD
- 1 x USB Cable
- 1 x Mounting Instructions
- 1 x Quick Start Guide
- 1 x Warranty Card
- 4 x Wall mount brackets
- 4 x Wall mount fixings
- 1 x TouchIT Stylus



[www.touchittechnologies.com](http://www.touchittechnologies.com)