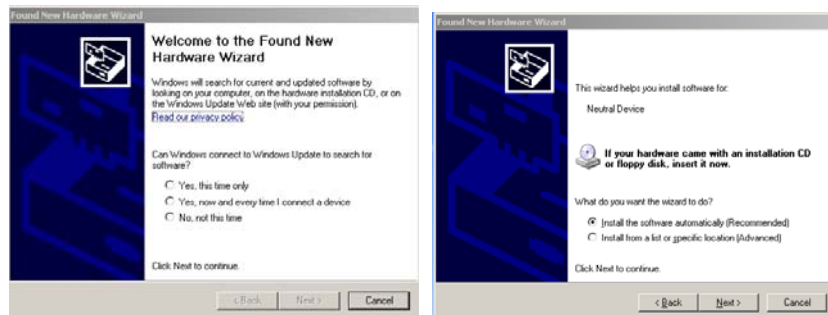




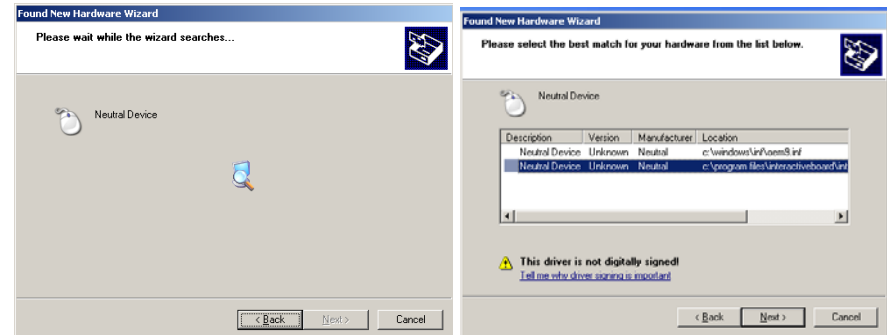
TouchIT Board – Driver Installation Guide

If your computer does not detect the driver automatically, please follow these instructions for how to install the driver manually.

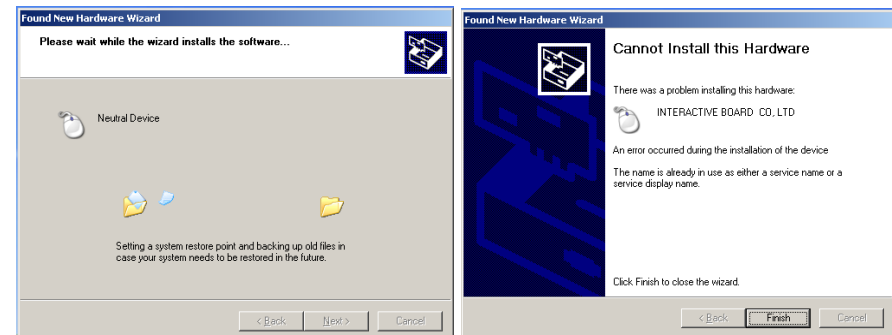
1. Found new hardware, click Yes to search for driver
2. If the driver is not found, choose install from specific location
3. Browse through to c:\Program Files\TouchIT Technologies\TouchIT Software\ (fig3)
4. Click OK
5. The machine should search and install a “Neutral Device” Choose the correct driver in the list (fig5)
6. Click “OK” Installation should now be complete



(fig3)



(Fig 5)



For more information, please visit

www.touchittechnologies.com/support/